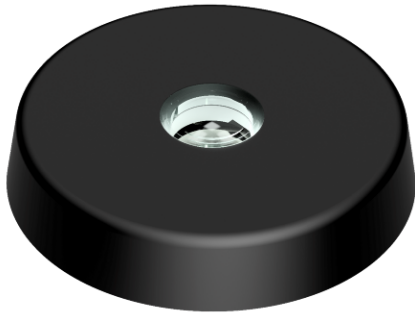


Decklight, White/White/Red light, Surface mnt

400-220

4 colors: Cold White, Warm White, Medium White and Red dimmable light.

Specifications	
Number	400-220
Dimensions metric	Ø65mm x 12,5mm
Certification	This Light is designed and manufactured to comply to IEC 60945
Dimensions imperial	2.56" x 0.5"
EAN	5704438021419
UPC Code	879343021542
Current consumption (mA @ 12VDC)	250
Current consumption (mA @ 24VDC)	125
Weight (Kg)	0 Kg
Weight (Oz)	0.00 Oz

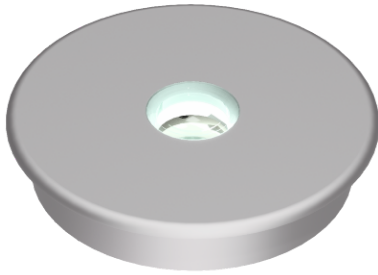


Decklight, White/White/Red light, Surface mnt, Blk

400-220-B

4 colors: Cold White, Warm White, Medium White and Red dimmable light.

Specifications	
Number	400-220-B
Dimensions metric	Ø65mm x 12,5mm
Certification	This Light is designed and manufactured to comply to IEC 60945
Dimensions imperial	2.56" x 0.5"
EAN	5704438021426
UPC Code	879343021559
Current consumption (mA @ 12VDC)	250
Current consumption (mA @ 24VDC)	125
Weight (Kg)	0 Kg
Weight (Oz)	0.00 Oz

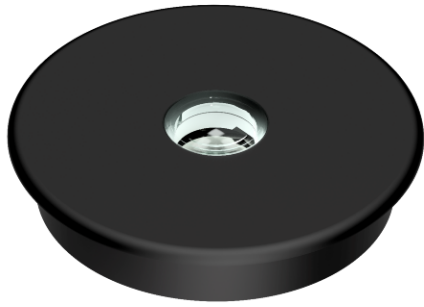


Decklight, White/White/Red light, Flush mnt

400-221

4 colors: Cold White, Warm White, Medium White and Red dimmable light.

Specifications	
Number	400-221
Dimensions metric	Ø65mm x 12,5mm
Certification	This Light is designed and manufactured to comply to IEC 60945
Dimensions imperial	2.56" x 0.5"
EAN	5704438021235
UPC Code	879343021368
Current consumption (mA @ 12VDC)	250
Current consumption (mA @ 24VDC)	125
Weight (Kg)	0 Kg
Weight (Oz)	0.00 Oz

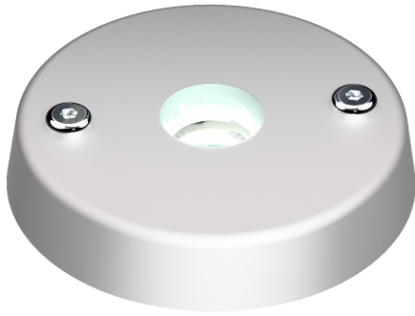


Decklight, White/White/Red light, Flush mnt, Blk

400-221-B

4 colors: Cold White, Warm White, Medium White and Red dimmable light.

Specifications	
Number	400-221-B
Dimensions metric	Ø65mm x 12,5mm
Certification	This Light is designed and manufactured to comply to IEC 60945
Dimensions imperial	2.56" x 0.5"
EAN	5704438021228
UPC Code	879343021351
Current consumption (mA @ 12VDC)	250
Current consumption (mA @ 24VDC)	125
Weight (Kg)	0 Kg
Weight (Oz)	0.00 Oz

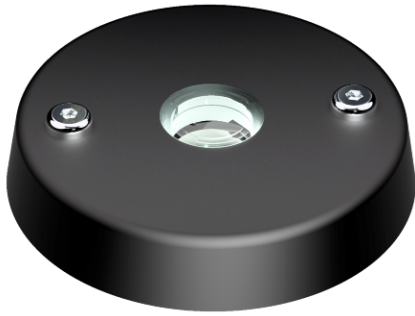


Spreader light, White/Red light, Surface mnt

400-222

With 2 holes for mounting (4.2mm)

Specifications	
Number	400-222
Dimensions metric	Ø65mm x 12,5mm
Certification	This Light is designed and manufactured to comply to IEC 60945
Dimensions imperial	2.56" x 0.5"
EAN	5704438022423
UPC Code	879343022556
Current consumption (mA @ 12VDC)	250
Current consumption (mA @ 24VDC)	125
Weight (Kg)	0 Kg
Weight (Oz)	0.00 Oz



Spreader light, White/Red light, Surface mnt, Blk

400-222-B

With 2 holes for mounting (4.2mm)

Specifications	
Number	400-222-B
Dimensions metric	Ø65mm x 12,5mm
Certification	This Light is designed and manufactured to comply to IEC 60945
Dimensions imperial	2.56" x 0.5"
EAN	5704438022942
UPC Code	879343023072
Current consumption (mA @ 12VDC)	250
Current consumption (mA @ 24VDC)	125
Weight (Kg)	0 Kg
Weight (Oz)	0.00 Oz



Decklight, White/White/Red light, Surface mnt

400-220-WH

White ceramic finish

4 colors: Cold White, Warm White, Medium White and Red dimmable light.

Specifications	
Number	400-220-WH
Dimensions metric	Ø65mm x 12,5mm
Certification	This Light is designed and manufactured to comply to IEC 60945
Dimensions imperial	2.56" x 0.5"
EAN	5704438039148
UPC Code	879343039271
Current consumption (mA @ 12VDC)	250
Current consumption (mA @ 24VDC)	125
Weight (Kg)	0 Kg
Weight (Oz)	0.00 Oz

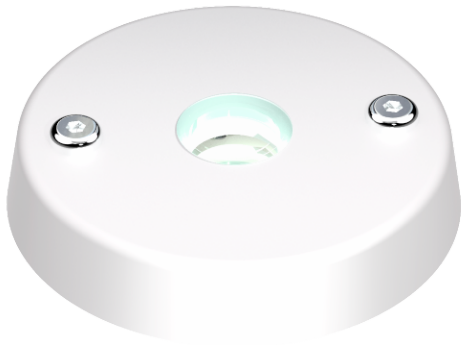


Decklight, White/White/Red light, Flush mnt

400-221-WH

White ceramic finish

Specifications	
Number	400-221-WH
Dimensions metric	Ø65mm x 12,5mm
Certification	This Light is designed and manufactured to comply to IEC 60945
Dimensions imperial	2.56" x 0.5"
EAN	5704438039568
UPC Code	879343039691
Current consumption (mA @ 12VDC)	250
Current consumption (mA @ 24VDC)	125
Weight (Kg)	0 Kg
Weight (Oz)	0.00 Oz



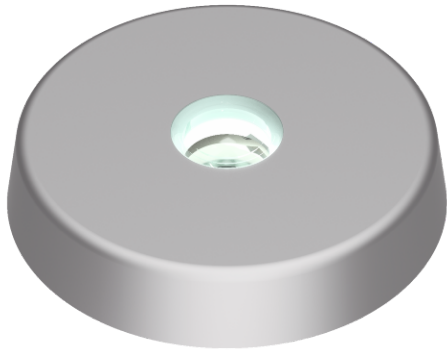
Spreader light, White/Red light, Surface mnt

400-222-WH

White ceramic finish

With 2 holes for mounting (4.2mm)

Specifications	
Number	400-222-WH
Dimensions metric	Ø65mm x 12,5mm
Certification	This Light is designed and manufactured to comply to IEC 60945
Dimensions imperial	2.56" x 0.5"
EAN	5704438039919
UPC Code	879343040048
Current consumption (mA @ 12VDC)	250
Current consumption (mA @ 24VDC)	125
Weight (Kg)	0.08 Kg
Weight (Oz)	2.91 Oz



Decklight/Interior & Spreader lights White/Warm White/Green/Red light. Surface/Flush mnt

Decklight/Interior & Spreader lights

Specifications	
Number	Decklight/Interior & Spreader lights
Light Color	White
Dimensions metric	Ø65mm x 12,5mm
Certification	This Light is designed and manufactured to comply to IEC 60945
Dimensions imperial	2.56" x 0.5"
Approved to	IEC 60945
EAN	5704438021419
IP rating	IP68
UPC Code	879343021542
Current consumption (mA @ 12VDC)	250
Current consumption (mA @ 24VDC)	125
Vessel size	All Sizes
Weight (Kg)	0 Kg
Weight (Oz)	0.00 Oz